

Refresco

CONFIDENTIAL INFORMATION SHEET

Juicee Crush 2L Long Life Juice Range



Item Code	Item	TUN	APN
801009	2LTRX6 JUICEE CRUSH CLOUDY PEAR JUICE	19345905010609	9345905010602
801001	2LTRX6 JUICEE CRUSH APPLE JUICE	19345905004332	9345905004335
801003	2LTRX6 JUICEE CRUSH APPLE BLACKCURRANT JUICE	19345905004349	9345905004342
801008	2LTRX6 JUICEE CRUSH 10 FRUITS JUICE	19345905010548	9345905010541
801023	2LTRX6 JUICEE CRUSH O.C. JUICE	19345905010845	9345905010848
801052	2LTRX6 JUICEE CRUSH APPLE BAN-MGO JUICE	19345905010562	9345905010565
801053	2LTRX6 JUICEE CRUSH ORANGE JUICE	19345905004356	9345905004359

BEVERAGE	DESCRIPTION	BEVERAGE	DESCRIPTION
PRODUCT NAME	Juicee Crush	BOTTLE	Pet
PACK SIZE	2 Litre	CAP	Plastic with Inner Hermetic Seal
FLAVOUR	Apple Blackcurrant	LABEL	Paper
DESCRIPTION	Long Life Juice	SHELF LIFE	360 Days
COUNTRY OF ORIGIN STATEMENT		ALLERGEN STATEMENT	
PACKED IN AUSTRALIA FROM IMPORTED INGREDIENTS		ALLERGEN-FREE	

INGREDIENTS
RECONSTITUTED FRUIT JUICES (99.7%) [APPLE (94.8%), BLACKCURRANT (4.9%)], FOOD ACID (CITRIC ACID), NATURAL FLAVOUR, VITAMIN C, NATURAL COLOUR (163).

LABEL
 

NUTRITION INFORMATION		
SERVINGS PER PACK: 8	SERVING SIZE: 250ml	%DI (DAILY INTAKE) IS BASED ON 8,700KJ

AVERAGE QUANTITY	PER SERVE	%DI PER SERVE	PER 100mL
ENERGY	465kJ	5%	186kJ
PROTEIN	1g	2.00%	<1g
FAT - TOTAL	<0.3g	<1g	<0.1g
- SATURATED	0g	<1g	0g
CARBOHYDRATE	26.2g	8%	10.5g
- SUGARS	22.2g	25.00%	8.9g
DIETARY FIBRE	<1g	<1g	<1g
SODIUM	20mg	<1g	8mg
VITAMIN C	25mg	62% (RDI)	10mg

DIET SUITABILITY	SUITABILITY (YES/NO)
VEGETARIAN, VEGAN AND COELIAC DIETS	YES
KOSHER DIET	NO
HALAL DIET	YES
CERTIFICATIONS	CERTIFIED (YES/NO)
KOSHER, HALAL CERTIFIED	NO

BEVERAGE	DESCRIPTION	BEVERAGE	DESCRIPTION
PRODUCT NAME	Juicee Crush	BOTTLE	Pet
PACK SIZE	2 Litre	CAP	Plastic with Inner Hermetic Seal
FLAVOUR	Apple	LABEL	Paper
DESCRIPTION	Long Life Juice	SHELF LIFE	360 Days
COUNTRY OF ORIGIN STATEMENT		ALLERGEN STATEMENT	
PACKED IN AUSTRALIA FROM IMPORTED INGREDIENTS		ALLERGEN-FREE	

INGREDIENTS
RECONSTITUTED APPLE JUICE (99.7%), FOOD ACID (CITRIC ACID), NATURAL FLAVOUR, VITAMIN C.

LABEL
 


NUTRITION INFORMATION		
SERVINGS PER PACK: 8	SERVING SIZE: 250ml	%DI (DAILY INTAKE) IS BASED ON 8,700KJ

AVERAGE QUANTITY	PER SERVE	%DI PER SERVE	PER 100mL
ENERGY	451kJ	5%	180kJ
PROTEIN	<1g	<1g	<1g
FAT - TOTAL	<1g	<1g	<1g
- SATURATED	<1g	<1g	<1g
CARBOHYDRATE	26.5g	9%	10.6g
- SUGARS	23.8g	29.00%	9.4g
DIETARY FIBRE	<1g	<1g	<1g
SODIUM	13mg	<1g	5mg
VITAMIN C	25mg	62% (RDI)	10mg

DIET SUITABILITY	SUITABILITY (YES/NO)
VEGETARIAN, VEGAN AND COELIAC DIETS	YES
KOSHER DIET	YES
HALAL DIET	NO
CERTIFICATIONS	CERTIFIED (YES/NO)
KOSHER, HALAL CERTIFIED	NO

BEVERAGE	DESCRIPTION	BEVERAGE	DESCRIPTION
PRODUCT NAME	Juicee Crush	BOTTLE	Pet
PACK SIZE	2 Litre	CAP	Plastic with Inner Hermetic Seal
FLAVOUR	Apple Mango Banana	LABEL	Paper
DESCRIPTION	Long Life Juice	SHELF LIFE	360 Days
COUNTRY OF ORIGIN STATEMENT		ALLERGEN STATEMENT	
PACKED IN AUSTRALIA FROM IMPORTED INGREDIENTS		ALLERGEN-FREE	

INGREDIENTS
RECONSTITUTED FRUIT JUICES (99.7%) [APPLE (93.7%), MANGO PUREE (5%), BANANA PUREE (1%)], FOOD ACID (CITRIC), NATURAL FLAVOURS, VITAMIN C, NATURAL COLOUR (163).

LABEL
 

NUTRITION INFORMATION		
SERVINGS PER PACK: 8	SERVING SIZE: 250ml	%DI (DAILY INTAKE) IS BASED ON 8,700KJ

AVERAGE QUANTITY	PER SERVE	%DI PER SERVE	PER 100mL
ENERGY	468kJ	5%	187kJ
PROTEIN	<1%	<1%	<1%
FAT - TOTAL	<1%	<1%	<1%
- SATURATED	<1%	<1%	<1%
CARBOHYDRATE	27.5g	9%	11.0g
- SUGARS	26.8g	30.00%	10.7g
DIETARY FIBRE	<1%	<1%	<1%
SODIUM	13mg	<1%	5mg
VITAMIN C	25mg	62% (RDI)	10mg

DIET SUITABILITY	SUITABILITY (YES/NO)
VEGETARIAN, VEGAN AND COELIAC DIETS	YES
KOSHER DIET	YES
HALAL DIET	NO
CERTIFICATIONS	CERTIFIED (YES/NO)
KOSHER, HALAL CERTIFIED	NO

BEVERAGE	DESCRIPTION	BEVERAGE	DESCRIPTION
PRODUCT NAME	Juicee Crush	BOTTLE	Pet
PACK SIZE	2 Litre	CAP	Plastic with Inner Hermetic Seal
FLAVOUR	Orange	LABEL	Paper
DESCRIPTION	Long Life Juice	SHELF LIFE	360 Days
COUNTRY OF ORIGIN STATEMENT		ALLERGEN STATEMENT	
PACKED IN AUSTRALIA FROM IMPORTED INGREDIENTS		ALLERGEN-FREE	

INGREDIENTS
RECONSTITUTED ORANGE JUICE (99.7%), FOOD ACID (CITRIC ACID), NATURAL FLAVOUR, VITAMIN C.

LABEL
 

NUTRITION INFORMATION		
SERVINGS PER PACK: 8	SERVING SIZE: 250ml	%DI (DAILY INTAKE) IS BASED ON 8,700KJ

AVERAGE QUANTITY	PER SERVE	%DI PER SERVE	PER 100mL
ENERGY	428kJ	5%	171kJ
PROTEIN	2g	4.00%	<1g
FAT - TOTAL	<1g	0.00%	<1g
- SATURATED	0g	0%	0g
CARBOHYDRATE	22.0g	7%	8.8g
- SUGARS	19.3g	21.00%	7.7g
DIETARY FIBRE	<1g	<1%	<1%
SODIUM	10mg	<1%	5mg
VITAMIN C	40mg	100% (RDI)	16mg

DIET SUITABILITY	SUITABILITY (YES/NO)
VEGETARIAN, VEGAN AND COELIAC DIETS	YES
KOSHER DIET	YES
HALAL DIET	YES
CERTIFICATIONS	CERTIFIED (YES/NO)
KOSHER, HALAL CERTIFIED	NO

BEVERAGE	DESCRIPTION	BEVERAGE	DESCRIPTION
PRODUCT NAME	Juicee Crush	BOTTLE	Pet
PACK SIZE	2 Litre	CAP	Plastic with Inner Hermetic Seal
FLAVOUR	Cloudy Pear	LABEL	Paper
DESCRIPTION	Long Life Juice	SHELF LIFE	360 Days
COUNTRY OF ORIGIN STATEMENT		ALLERGEN STATEMENT	
PACKED IN AUSTRALIA FROM IMPORTED INGREDIENTS		ALLERGEN-FREE	

INGREDIENTS
RECONSTITUTED PEAR JUICE (99%), DIETARY FIBRE (ACACIA), FOOD ACID (CITRIC), VITAMIN C, NATURAL FLAVOUR.



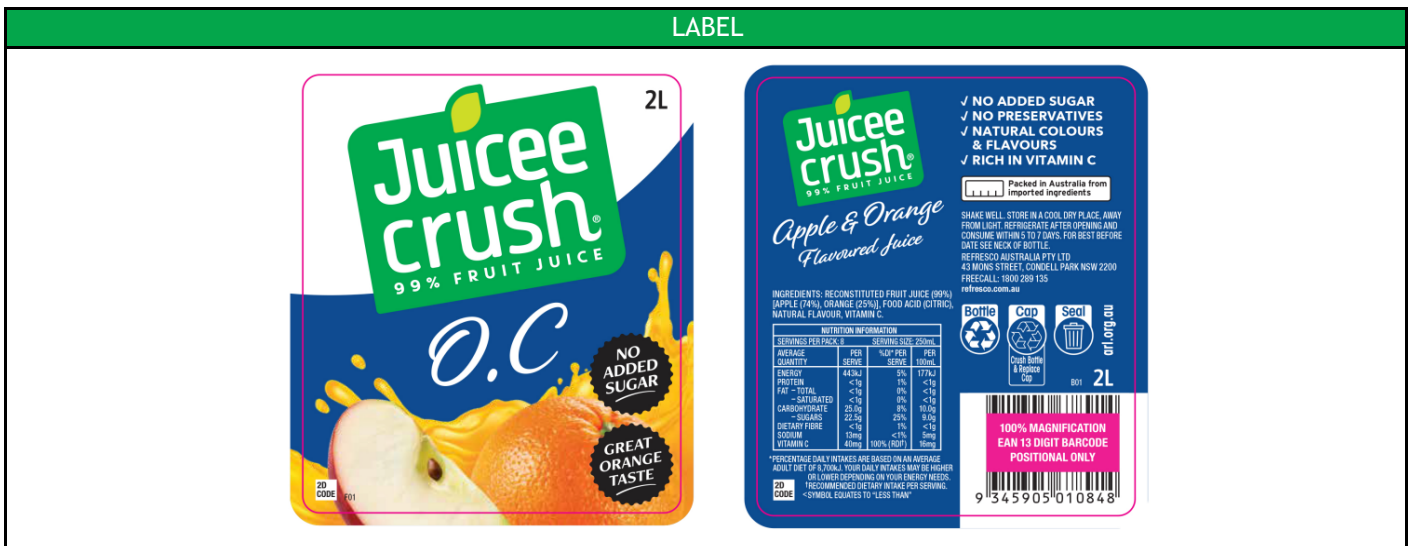
NUTRITION INFORMATION		
SERVINGS PER PACK: 8	SERVING SIZE: 250ml	%DI (DAILY INTAKE) IS BASED ON 8,700KJ

AVERAGE QUANTITY	PER SERVE	%DI PER SERVE	PER 100mL
ENERGY	490kJ	9%	196kJ
PROTEIN	<1g	<1g	<1g
FAT - TOTAL	0g	0g	<0g
- SATURATED	0g	0g	<0g
CARBOHYDRATE	30.0g	10%	12.0g
- SUGARS	20.0g	22.00%	8.0g
DIETARY FIBRE	2g	6.70%	0.8g
SODIUM	13mg	<1%	5mg
VITAMIN C	20mg	50% (RDI)	8mg

DIET SUITABILITY	SUITABILITY (YES/NO)
VEGETARIAN, VEGAN AND COELIAC DIETS	YES
KOSHER DIET	YES
HALAL DIET	NO
CERTIFICATIONS	CERTIFIED (YES/NO)
KOSHER, HALAL CERTIFIED	NO

BEVERAGE	DESCRIPTION	BEVERAGE	DESCRIPTION
PRODUCT NAME	Juicee Crush	BOTTLE	Pet
PACK SIZE	2 Litre	CAP	Plastic with Inner Hermetic Seal
FLAVOUR	O.C	LABEL	Paper
DESCRIPTION	Long Life Juice	SHELF LIFE	360 Days
COUNTRY OF ORIGIN STATEMENT		ALLERGEN STATEMENT	
PACKED IN AUSTRALIA FROM IMPORTED INGREDIENTS		ALLERGEN-FREE	

INGREDIENTS
RECONSTITUTED FRUIT JUICES (99%) [APPLE (74%), ORANGE (25%)], FOOD ACID (CITRIC), NATURAL FLAVOUR, VITAMIN C.



NUTRITION INFORMATION		
SERVINGS PER PACK: 8	SERVING SIZE: 250ml	%DI (DAILY INTAKE) IS BASED ON 8,700KJ

AVERAGE QUANTITY	PER SERVE	%DI PER SERVE	PER 100mL
ENERGY	451kJ	5%	177kJ
PROTEIN	<1g	1%	<1g
FAT - TOTAL	<1g	0%	<1g
- SATURATED	<1g	0%	<1g
CARBOHYDRATE	25.0g	8%	10.6g
- SUGARS	22.5g	25%	9.0g
DIETARY FIBRE	<1g	1%	<1g
SODIUM	13mg	<1%	5mg
VITAMIN C	40mg	100% (RDI)	16mg

DIET SUITABILITY	SUITABILITY (YES/NO)
VEGETARIAN, VEGAN AND COELIAC DIETS	YES
KOSHER DIET	YES
HALAL DIET	YES
CERTIFICATIONS	CERTIFIED (YES/NO)
KOSHER, HALAL CERTIFIED	NO